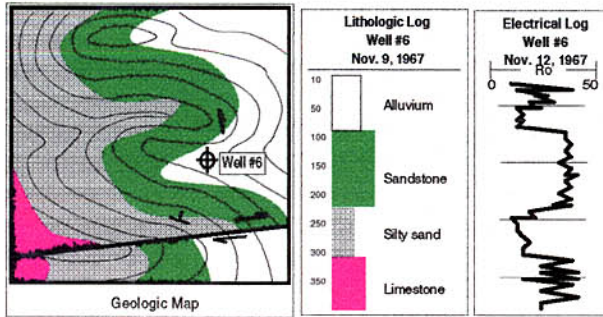


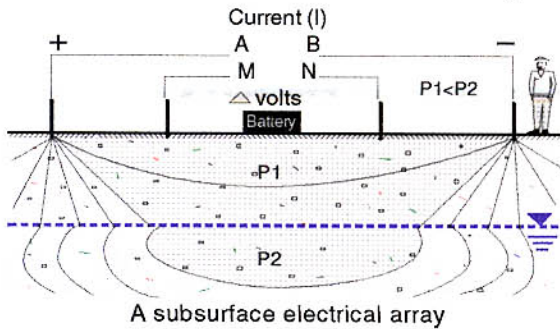
GROUND-WATER EXPLORATION

RESEARCH

Geoconsultants, Inc. maintains an extensive geologic and hydrogeologic library, which can be accessed through a computerized index.



Typical historical information concerning a study area



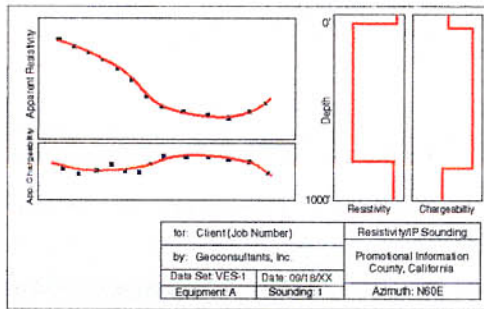
A subsurface electrical array

FIELD WORK

Typically, a hydrogeologic reconnaissance is performed prior to geophysical exploration. State-of-the-art technologies are utilized to gather information on subsurface features.

DATA PROCESSING

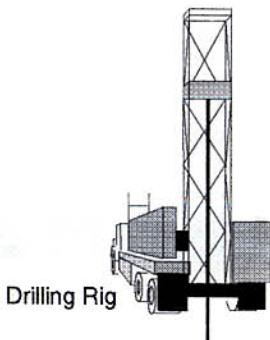
Computer-aided interpretation and evaluation of field geophysical data is analyzed with known hydrogeological information in order to select a location for further exploration by test drilling.



Results of a resistivity sounding

DRILL MONITORING

Observation of drilling operations and analysis of the subsurface lithologic samples and electrical logs provide information needed to design the test well such as depth of cement seal, screen placement, and perforation size.



WELL DESIGN

Once the well is completed, pumping tests, and water sample analysis can be performed to determine the optimum water quantity and quality that can be expected from a production well.

